

3<sup>rd</sup> Mekong Forum, 19-21 November, Hanoi, Vietnam

Session 17: Governance, institutions and decision-making about dams.

# Chinese Studies on Impacts of Dams

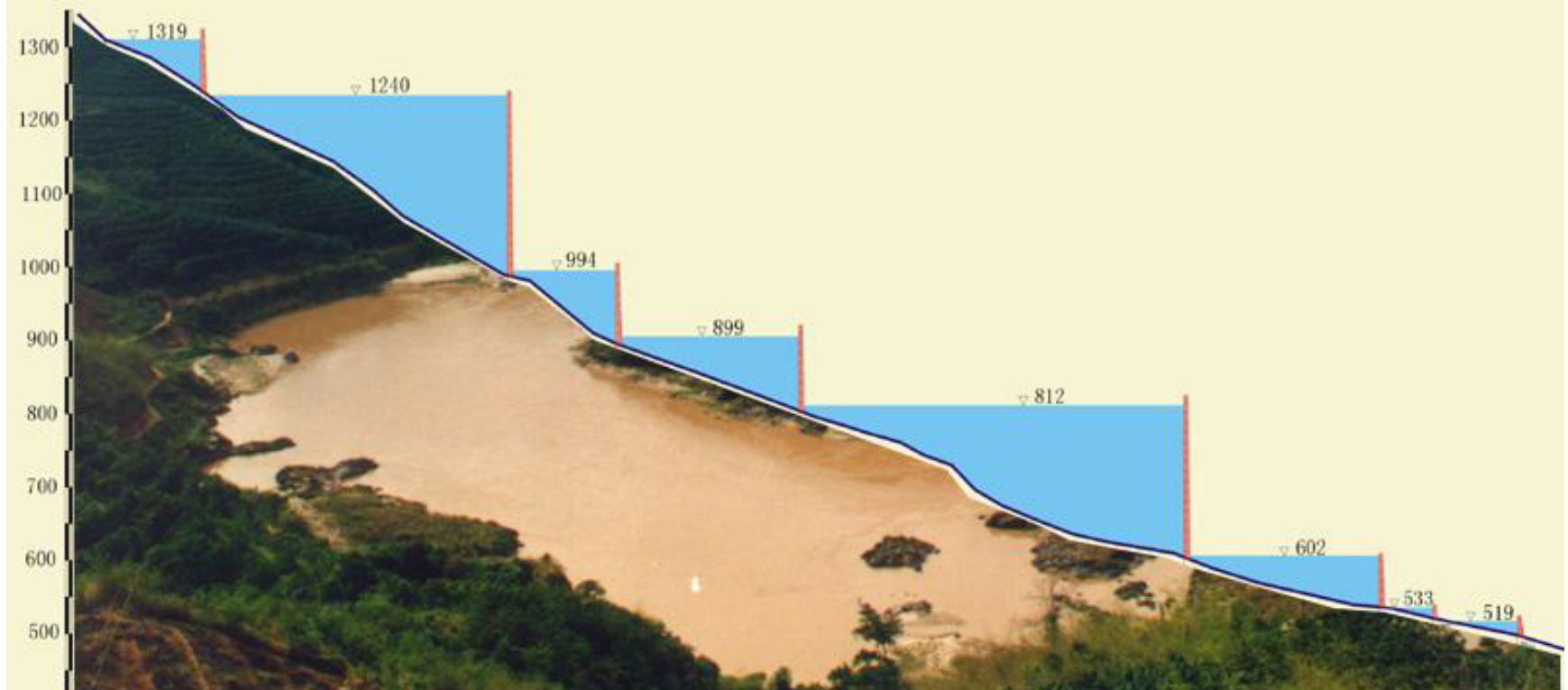
Xing Lyu

Yunnan University, Kunming, China

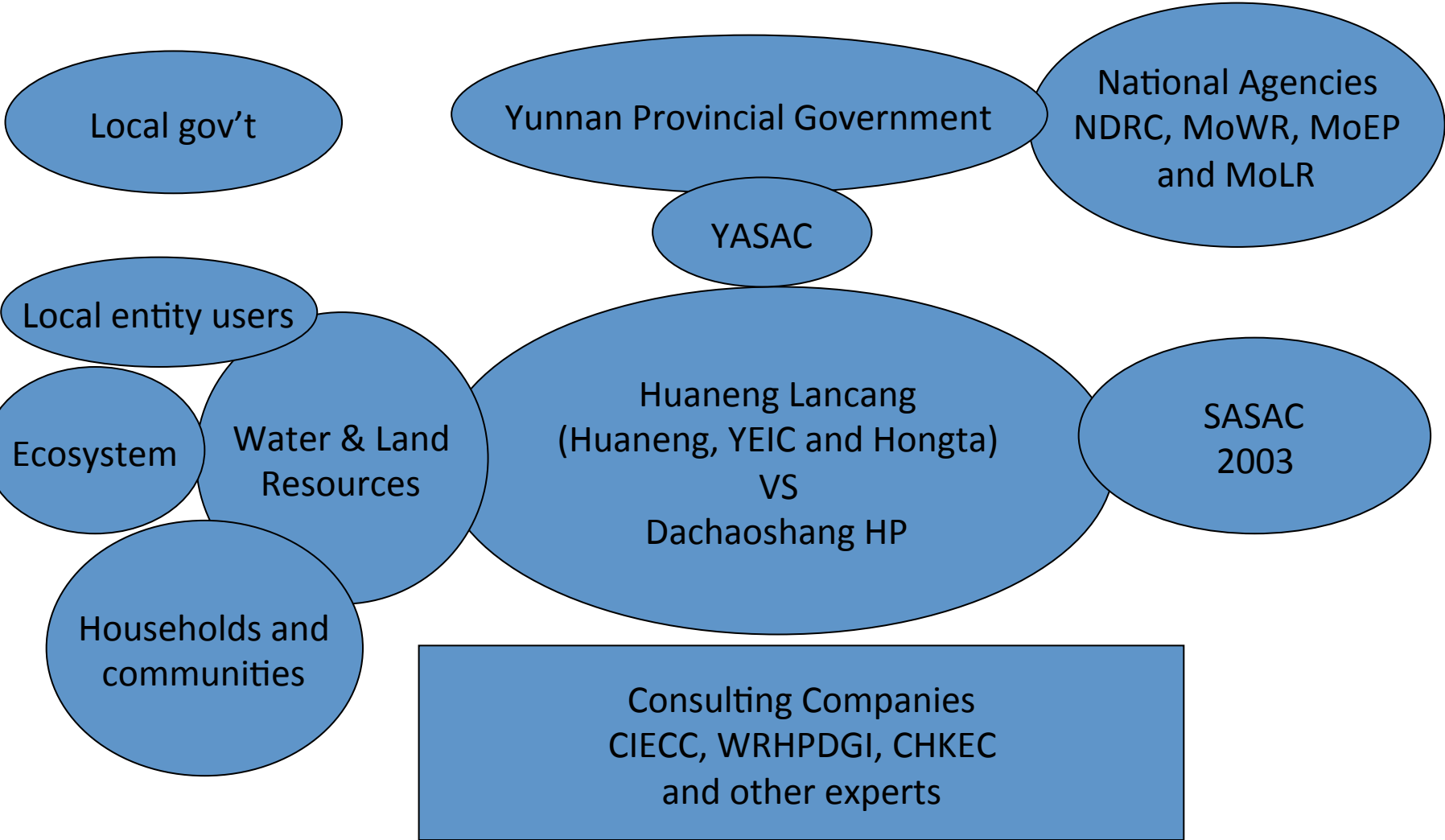
# The Lancang Cascade Dams

澜沧江中下游河段梯级水电站纵剖面示意图

(功果桥~南蜡河口)



# Key actors and Relations



# Justification: Developers' perspective

- Abundant water resources are barely exploited
- Increasing and unevenly demands ought to be met and offset
- Economy/local livelihoods are indisputably promoted
- HP is green and renewable energy

# Justifications: Consultants' perspective

- Abundant water resources and technically viable
- Demand mainly from Eastern China while Yunnan and Guizhou are potential suppliers
- Flow changed to benefit navigation
- Local revenue and income increased so that social agenda can be pushed
- Fuel-wood (less tree cutting) partially substituted by electricity

# Justifications:

Perspective of officials and scholars connected to gov't

- HP is a silver bullet to economic development
- HP is technical viable to Yunnan
- HP with huge regulating capacity can offset the seasonality
- HP is well studied

# Question

- Questions:
  - How can the claimed justifications be validated if there is no information available to public?
  - How can these claims, rather than social and environment costs, be easily included in decision making?
  - .....

# Impacts on: hydrology

- Flow reduced in July, August and September
- Sediments continuously reduced at Jinghong while that at Chiangsaen started to increase since 1997
- Thick sediments at Jinghong not correlated to that at Chiangsaen but fine sediment does
- Surface water temperature increased before dams and decreased after dams



# Impacts on: Biodiversity

- Habitats threatened around dams
- Green algae increased and charophyta decreased
- Birds increased around dam because of food
- Fish species with contradictory findings
- A ratio of 1:5.6 of environmental gain over loss
- 9 plant communities threatened
- .....

# Impact on: Livelihoods

- More than 60,000 people to be reallocated and more affected
- Large productive farmland land and forests taken
- Income of affected people decreased in early projects
- Income sources changed and depended more on seasonal labor wage and compensation and less agriculture
- .....

# More questions

- Are critiques reliable given their limited scope of study?
- What are the cumulative impacts of cascade dams?
- How can various studies' findings or critiques be included in dialogue or decision making?
- Can the claimed national interests (?) transcend local communities' and environment interests?
- .....

Thanks!